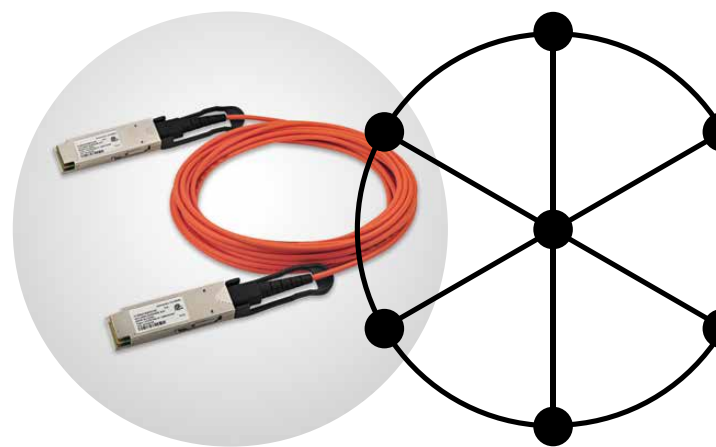
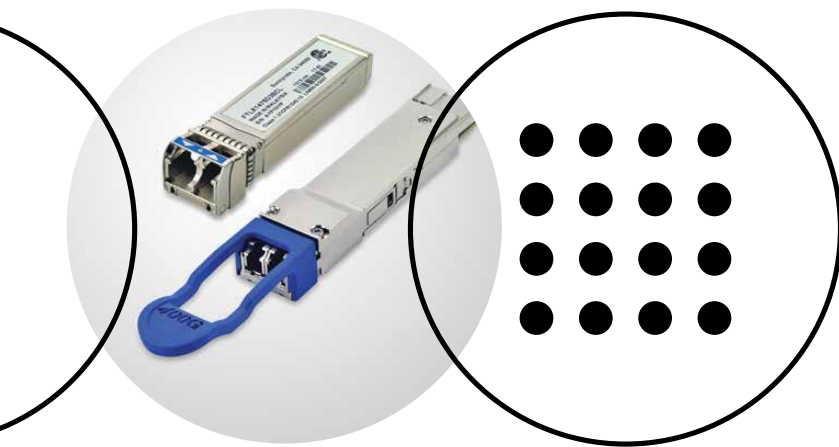


FINISAR[®] TRANSCEIVERS AND ACTIVE OPTICAL CABLES



FINISAR® TRANSCEIVERS AND ACTIVE OPTICAL CABLES

SFP (copper and optical; longwave, shortwave and WDM)

Datacom applications using Fast Ethernet, Gigabit Ethernet, 1x/2x/4x Fibre Channel

Telecom applications using OC-3/STM-1, OC-12/STM-4, OC-48/STM-16, EPON/GPON and Wireless/CPRI across all reaches

Features

- 3.3 V operating voltage
- Distances from very short links up to 100+ km
- Wide operating temperature range
- Metal enclosure for lower EMI
- Digital diagnostics
- Wireless CPRI compliant



SFP+/SFP28/SFP56

(optical; longwave, shortwave, DWDM and tunable)

Datacom applications using 10G, 25G, and 50G Ethernet and 2x/4x/8x/10x/16x/32x/64x Fibre Channel (LW and SW)

Telecom applications using either OC-192/STM-64, 10G Ethernet, or Wireless/CPRI

Features

- 3.3 V operating voltage
- Supports bit rates up to 57.8 Gb/s (LW, SW), 28.05 Gb/s (DWDM) and 25.78Gb/s (Tunable)
- Distances from short links up to 80 km LW, SW, DWDM (tunable and fixed)
- Wide operating temperature range
- Digital diagnostics
- Wireless CPRI compliant (LW and SW)
- Bi-directional SFP+ transceiver available



CFP/CFP2/CFP4

(optical; longwave and shortwave)

Datacom applications using 100G Ethernet

Telecom applications using OTU4

Features

- Hot-pluggable, MSA-compliant CFP, CFP2, and CFP4 form factors
- Supports 103.1 Gb/s to 112 Gb/s aggregate bit rates
- Maximum link length of 100 m on OM3 MMF, 150 m on OM4 MMF, 10 km on SMF
- 3.3 V operating voltage



QSFP+/QSFP28/QSFP56

(optical; longwave, shortwave, DWDM and tunable)

Datacom applications using 40G, 100G, and 200G Ethernet and high-density 10G, 25G, and 50G Ethernet

Telecom applications using OTU3 and OTU4

Features

- Four-channel full duplex transceiver module
- Single-channel full duplex transceiver module (QSFP28 only)
- Hot-pluggable, MSA-compliant QSFP+, QSFP28 and QSFP56 form factors
- Maximum link length of 300 m on OM3 MMF, 400 m on OM4/OM5 MMF, and 40 km on SMF (QSFP+ only)
- 3.3 V operating voltage
- Digital diagnostics
- Wireless CPRI compliant (LW and SW)
- I-Temp variants available



QSFP-DD/OSFP

 (optical; longwave and shortwave)

Datacom applications using 400G and 800G Ethernet and high-density 50G and 100G Ethernet

Features

- Four- or eight-channel full duplex transceiver module
- Hot-pluggable, MSA-compliant form factor
- Maximum link length of 70 m on OM3 MMF, 100 m on OM4 MMF and 10 km on SMF
- 3.3 V operating voltage
- Digital diagnostics



CXP

 (optical; shortwave)

Datacom applications for high-bandwidth, chassis interconnections

Features

- Twelve-channel full-duplex transceiver module
- Hot Pluggable CXP form factor
- Maximum link length of 300 m on OM3 MMF and 400 m on OM4 MMF
- Multi-rate Capability: Supports 1 Gb/s to 16 Gb/s per channel



Optical Engines (optical; shortwave)

Datacom applications for inter-chassis connections

Features

- Twelve-channel full-duplex transceiver modules
- Maximum link length of 70 m at 25 Gb/s on OM4 MMF
- Multirate capability: supports 1 Gb/s up to 28.1 Gb/s per channel



Coherent Transceivers (optical; longwave)

Telecom 100 Gb/s, 200 Gb/s, and 400Gb/s applications

Features

- Digital Coherent Optics (with built-in Digital Signal Processor) and Analog Coherent Optics (paired with external DSP) modules
- Enables “pay-as-you-grow” deployment of coherent optics
- Supports multiple modulation formats, with aggregate data rates up to > 400 Gb/s



SFF (optical; longwave and shortwave)

Datacom applications using Gigabit Ethernet, 1x/2x/4x Fibre Channel

Telecom applications using OC-3/STM-1, and OC-48/STM-16 across all reaches

Features

- Distances from very short links up to 15 km
- Wide operating temperature range
- Available in 2x5, 2x7 or 2x10. 2x7 and 2x10 incorporate digital diagnostics



Digital Diagnostics

Our Finisar® transceivers feature a microprocessor and diagnostics interface that provide performance information on the data link. Users can remotely monitor—in real-time—received optical power, transmitted optical power, laser bias current, transceiver input voltage and transceiver temperature of any transceiver in the network. These patented digital diagnostic functions provide network managers with a highly accurate, cost-effective tool for implementing reliable performance monitoring.

XFP (optical; longwave)

Datacom applications using 10G Ethernet and 10x Fibre Channel

Telecom applications using OC-192/STM-64

Features

- Supports bit rates up to 11.3 Gb/s
- Distances up to 10 km
- Digital diagnostics
- Wide operating temperature range versions available



Endurance Compact Transceivers

(optical; longwave and shortwave)

Features

- Compact form-factor for high-density solutions
- Data rate flexibility including 1G and 10G Ethernet, Fast Ethernet, and 1x/2x/4x/8x/16x Fibre Channel
- Board-mounted for an edge optical interface or internal mounting
- Designed for rugged applications



Active Optical Cables

SFP⁺wire[®]

10 Gb/s and 25 Gb/s SFP+ Active Optical Cable for Ethernet; available with Connectivity Diagnostics[®] visual fault alert

quadwire[®]

40 Gb/s to 400 Gb/s Parallel Active Optical Cable for 40, 100, and 400 Gigabit Ethernet and InfiniBand™ QDR, FDR, EDR, HDR, and NDR; 40G available with Connectivity Diagnostics[®] visual fault alert



C.wire[®]

120 to 200 Gb/s Parallel Active Optical Cable for 100GbE and InfiniBand 12xQDR

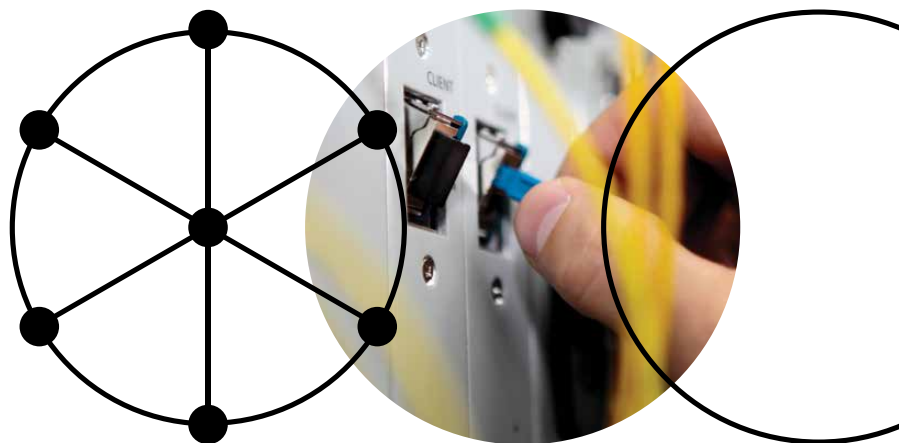
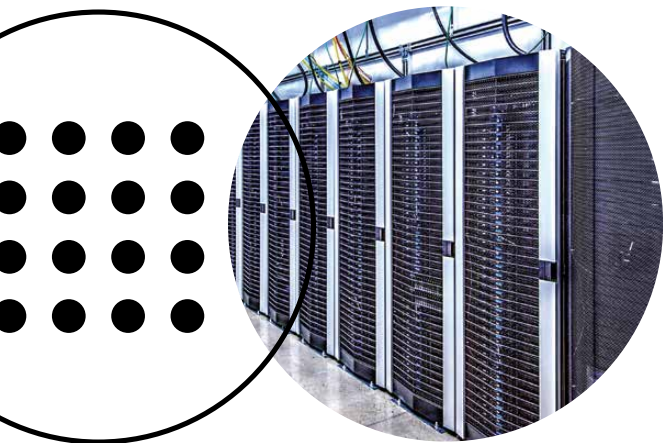


Table with columns: Part Number, Rate Select, Media Type, Wavelength (nm), Transmitter, Receiver, Data Rate (max), Reach, Case Temp. Range (°C), Ethernet, Fibre Channel, SONET, OTN, InfiniBand, CPRI, Connector. Rows are categorized by SFP, SFP+, SFP28/SFP56, CFP, CFP2/CFP4, QSFP+, QSFP28/QSFP56, QSFP-DD/OSFP, CXP, OPTICAL ENGINES, COHERENT, XFP, ENDURANCE, SFF, and ACTIVE OPTICAL CABLES.

Using OM3 multimode fiber. Extended case temperature ranges and reaches are available upon request. 100m using OM4 multimode fiber and FEC. 30m/50m/70m OM3 MMF for FEC Free, Firecode FEC and RS-FEC respectively. Other operating case temp. range options are available. *Wireless CPRI include the following data rates (Gb/s): 1.23, 3.07, 4.92, 6.14, 9.83, 24.33